

INSTALLATION INSTRUCTION SHEET FOR:
CHEV/GMC 4X4: 2004 & LATER COLORADO/CANYON

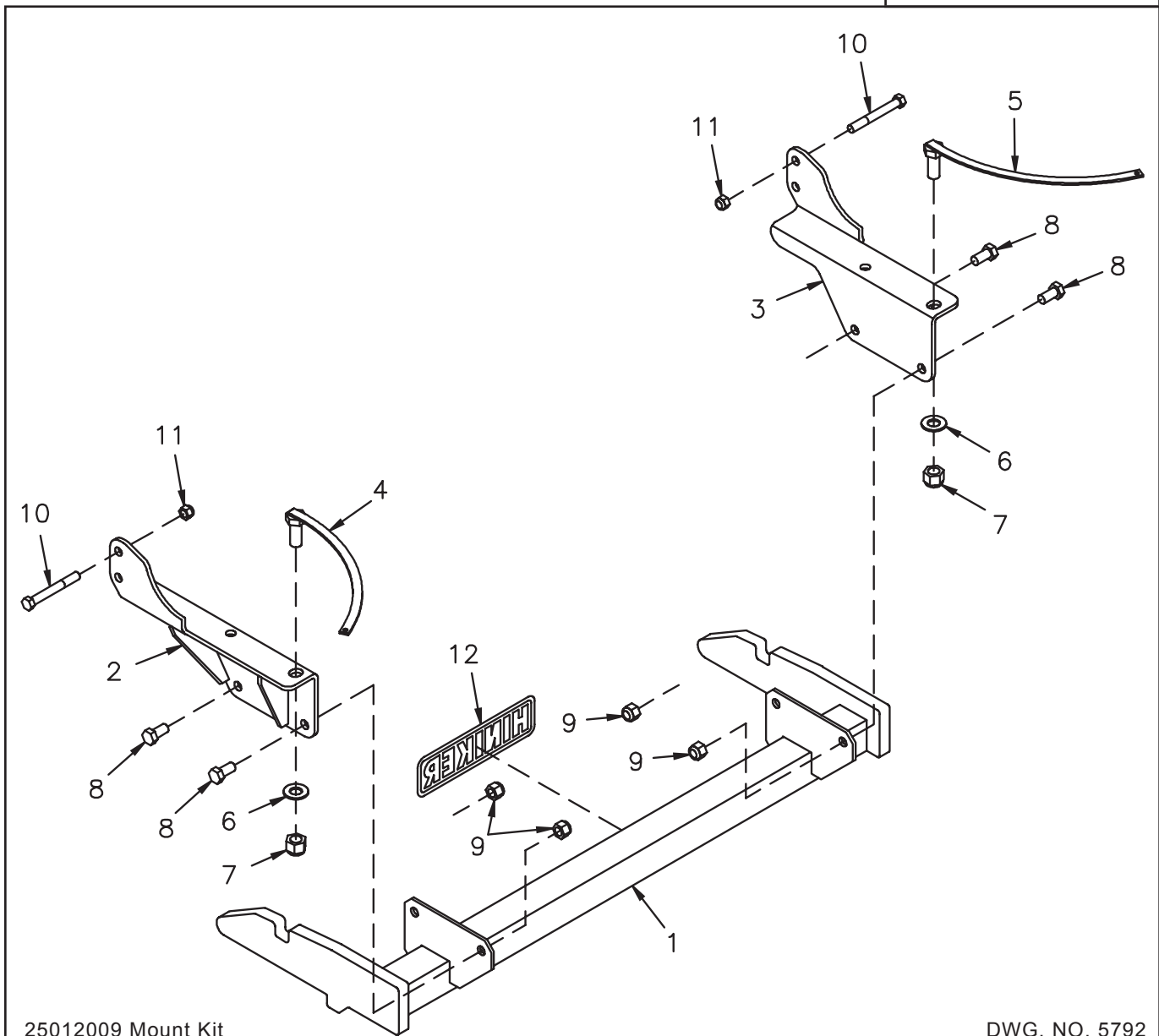
INSTRUCTION SHEET NO: 25012008

March 21, 2006



IMPORTANT: Read the Snowplow Operator's Manual before assembling this kit.

REAR BALLAST -
150 lbs. when plow is attached.
Secure Weight Behind Rear
Wheels.



25012009 Mount Kit

DWG. NO. 5792

REF. NO.	PART NUMBER	DESCRIPTION	QTY.	REF. NO.	PART NUMBER	DESCRIPTION	QTY.
1	25012010	Prong Weldment	1	8	950-001-111	Hex Head Cap Screw 1/2-13 x 1 1/4 Gr. 5	4
2	25012011	LH Side Bracket Weldment	1	9	951-003-009	Lock Nut 1/2-13 Nylon Insert	4
3	25012012	RH Side Bracket Weldment	1	10	950-001-257	Hex Head Cap Screw 7/16-14 x 3 1/2 Gr. 5	4
4	25012013	LH Side Bolt Weldment	1	11	951-003-003	Lock Nut 7/16-14 Nylon Insert	4
5	25012014	RH Side Bolt Weldment	1	12	25010008	Hiniker Decal	1
6	952-003-003	SAE Flat Washer 5/8 Inch	2	25012007	Bolt Bag		1
7	060756	Lock Nut 5/8-11 Nylon Insert	2				

All hardware should be tightened only enough to ensure safety during assembly. Fully tighten all hardware after entire assembly is completed.

GRADE 5 TYPE B & F LOCK NUT TORQUE VALUES

Size	Ft-lbs.	N-m
5/16"	13-18	17-25
3/8"	23-33	31-44
1/2"	58-82	79-112
5/8"	117-165	158-223

GRADE 5 BOLT TORQUE VALUES*

Size	Ft-lbs.	N-m
1/4"	8-12	11-16
3/8"	29-41	39-56
1/2"	73-103	99-140
5/8"	146-206	198-279

* applications without lock nuts

1. Remove the spoiler from the air dam under the truck bumper by releasing two plastic expanding rivets, then unsnapping the spoiler from the air dam.



PHOTO NO. 9932

The spoiler will not be reinstalled with the snowplow mount kit.

If the vehicle is equipped with tow hooks, unbolt tow hooks from the front of the frame members and set aside tow hooks and hardware for reassembly.

2. Insert the LH and RH bolt weldments from the kit into the large round holes through the outside walls of the vehicle frame rails.



PHOTO NO. 9936

Leave the bolts inside the rails near holes through the bottom of the frame.

3. Lift the LH and RH side bracket weldments to the bottom and outside of their respective frame rails so that the three mount holes in the side brackets align with holes in the vehicle frame.

Note that the front vertical part of the brackets must be maneuvered to fit inside a vertical channel on the truck frame to fit tight against the frame rails.



PHOTO NO. 9927

Use the handles of the bolt weldments to drop the bolts through holes in the frame and brackets.

Loosely thread a 5/8 inch lock nut and flat washer onto each bolt to hold the brackets in place.

If the vehicle was equipped with tow hooks, use the original hardware removed in Step 1 to fasten the two front holes of each side bracket to the vehicle frame and to reinstall the tow hooks.

If the vehicle was not equipped with tow hooks, use the four 7/16 inch x 3 1/2 inch hex bolts and lock nuts supplied in the kit to fasten the front holes of the side brackets to holes in the vehicle frame.

4. Loosely bolt the prong weldment between the LH and RH side brackets with four 1/2 inch x 1 1/4 inch hex bolts and lock nuts.



PHOTO NO. 9921

Push the LH and RH side brackets up and back against the vehicle frame before fully tightening the three fasteners in each bracket.

Likewise, push the prong weldment up and back before fully tightening the remaining hardware.

The bottom edges of the prongs should measure about 10 inches above the ground when complete.